

Display Signal Strength as “Heat Map” Overlay on Maps and Charts

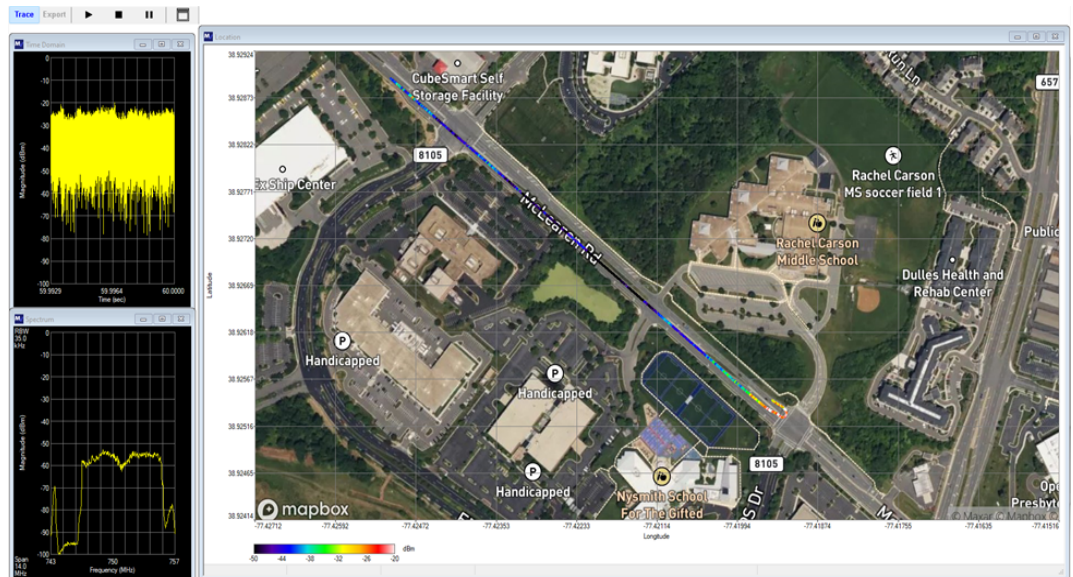
Overview

MapVu creates “heat map” depictions of geo-referenced spectrum data that has been recorded using a moving platform such as a man-pack, vehicle, aircraft or drone. **MapVu** is a stand-alone Windows application that works seamlessly with the ERISYS **SigPro** recording, analysis, signal creation, and playback system and the ERISYS **ZoomOut™** software.

Broadband spectrum captures using the ERISYS **SigPro** system can be precisely location and time tagged. The location and time information is stored along with the signal IQ data. Broadband RF spectrum captures can be channelized using the ERISYS **ZoomOut™** software to isolate individual emitters. There is no limit to the number of different emitters that can be channelized within a given broadband recording. This makes it possible for a single broadband spectrum capture mission to geo-locate many different emitters. **MapVu** can overlay signal strength as a configurable “heat map” on a variety of different types of digital maps. The recording missions and spectrum captures can be of any duration.

MapVu Examples

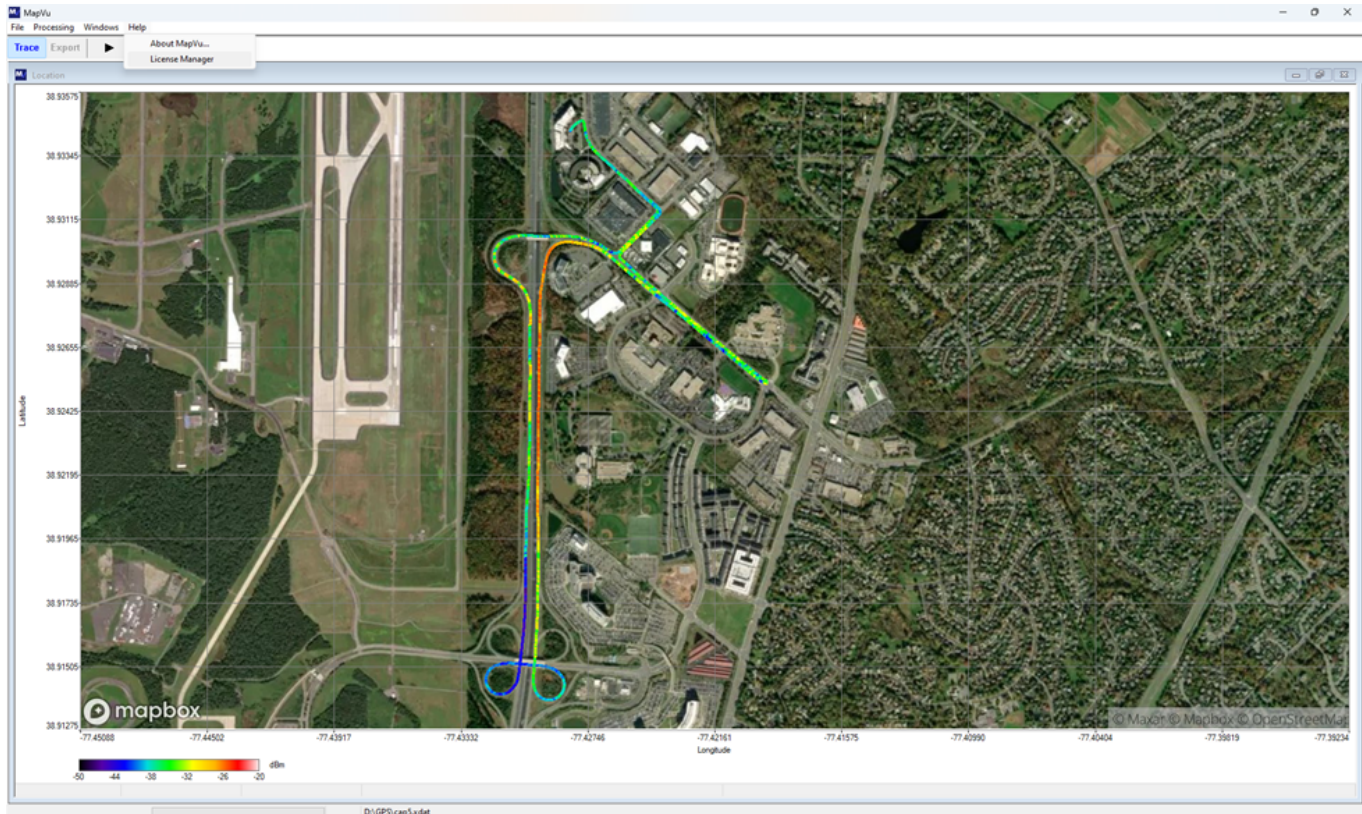
When Recording RF spectrum on the move, whether it is on foot, in a vehicle, or in the air, **MapVu** can be used to geolocate emitters. This can be done simply and rapidly using the analysis and channelization tools available in the ERISYS **ZoomOut™** software. During the capture mission the spectrum IQ information can be automatically and precisely time and location tagged. Location and time information are automatically associated with the corresponding spectrum and signal IQ information throughout the analysis process.



Data Sheet

MapVu

MapVu overlays the channelized received power information on satellite images, generated maps, building floor plans, custom maps, or images. It provides a color-coded plot of signal strength vs time and position as a map overlay. This allows the general location of emitters of interest to be easily seen. It also can be used to document the coverage areas and likely regions of poor performance for broadcast and cellular systems.



The ERISYS **SigPro** system can record multiple channels, up to 1 GHz IBW each which can contain hundreds or thousands of signals. ERISYS **ZoomOut™** software can seamlessly channelize signals of interest allowing a single capture mission to aid in geolocating numerous emitters. The color coding of received signal power vs. time can be customized.

We can help you solve your most difficult RF spectrum challenges

For more information, please contact **ERISYS RF Solutions** for consultation and on-site demonstration. We have decades of experience with EW oriented RF Spectrum Analysis and signal generation.

You can reach us on the web at www.erisys.com or via email at Sales@erisys.com.